

**DOCUMENT 00 90 00**

**ADDENDUM**

**ADDENDUM NO. [4]**

**Date: September 23, 2019**

**RE: SCHOOL DISTRICT OF LA CROSSE  
7 RIVERS CHARTER SCHOOL  
225 5<sup>TH</sup> AVE SOUTH  
LA CROSSE, WI 54601  
HSR 19003**

**FROM: HSR Associates, Inc.  
100 Milwaukee Street  
La Crosse, WI 54603  
(608) 784-1830**

**To: Prospective Bidders**

This addendum forms a part of the Contract Documents and modifies the original Bidding Documents dated August 2019. Acknowledge receipt of this Addendum in the space provided on the bid form. Failure to do so may subject the Bidder to disqualification.

This Addendum consists of [1] page and [1] 8 ½ x 11 detail.

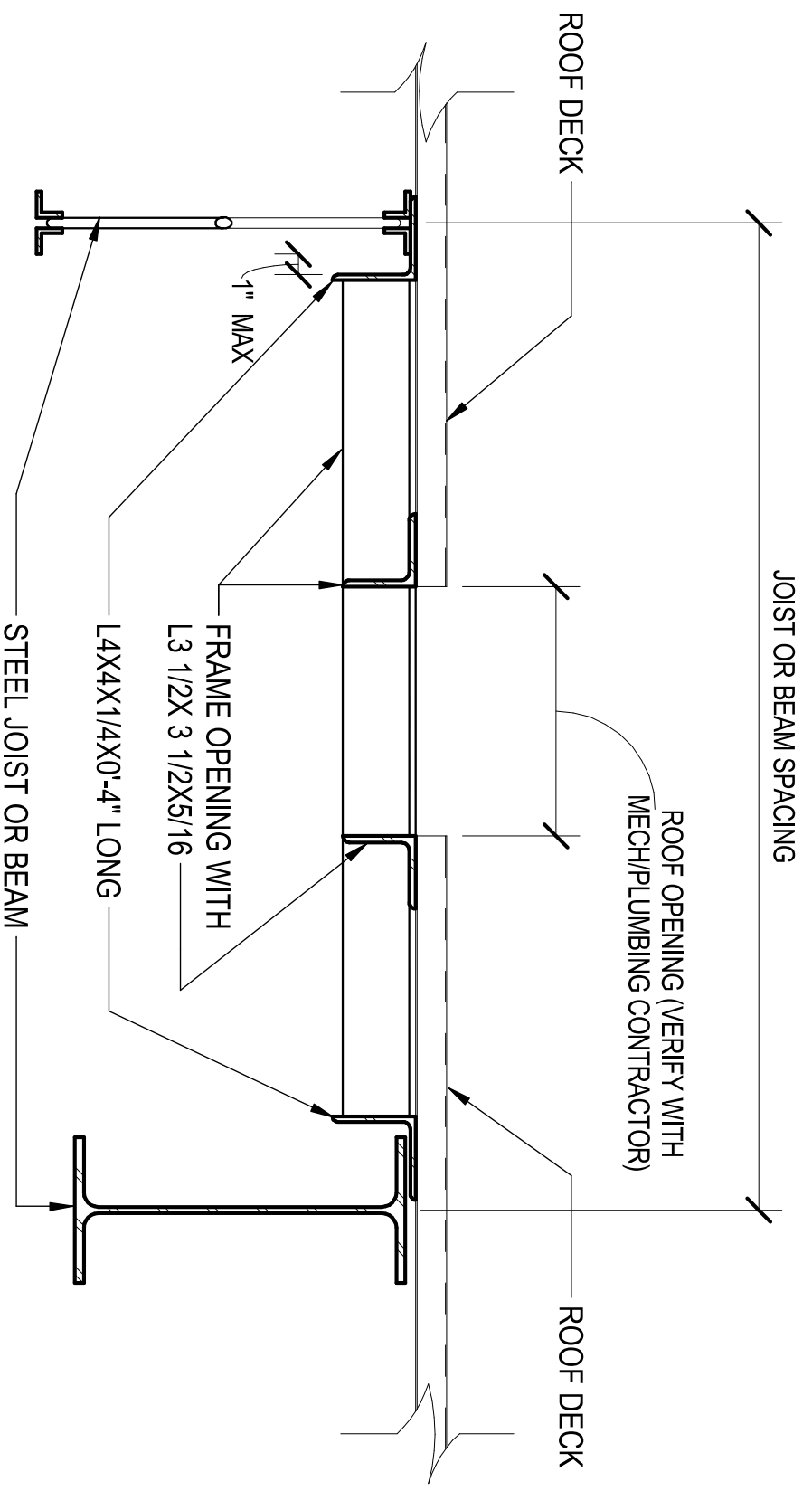
**CHANGES TO DRAWINGS**

1. Sheet A120 ROOF PLAN

- a. Detail 3A120: Refer to attached detail for angle support of metal deck at equipment openings.
- b. Detail 7A120: Steel beam curb size shall be W8x18.

**END OF DOCUMENT 00 90 00**

Page Intentionally Left Blank



**NOTE:**  
 GC TO VERIFY SIZE, SHAPE AND LOCATION OF ALL ROOF OPENINGS WITH APPROPRIATE TRADES PROVIDING TYPICAL FRAME AT ALL OPENINGS:

1. LARGER THAN 13"Ø OR 9" SQUARE OR
2. SUPPORTING IN EXCESS OF 60LBS EQUIPMENT LOADS

# TYPICAL FRAMING AT ROOF OPENINGS

SCALE: 1" = 1'-0"